

BELPER TOWN FOOTBALL CLUB



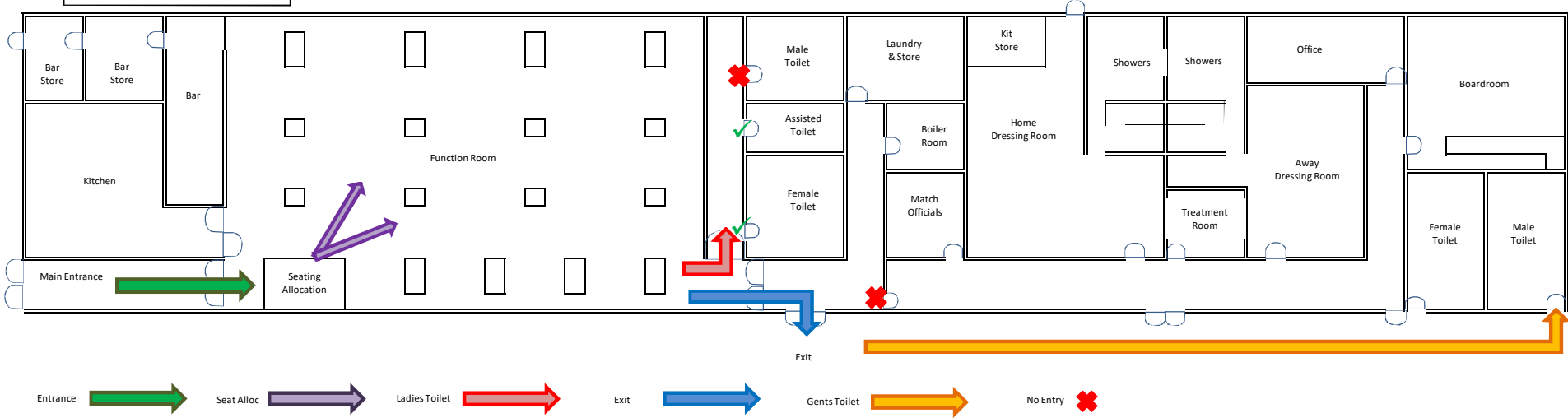
CONTROL MEASURES FOR COVID-19 RISKS



Access	<ul style="list-style-type: none"> • Notice displayed requesting visitors not to enter if they have symptoms of Covid-19 • Deliveries to be left outside of the building for collection by authorised staff • Hand sanitising station placed at entrance to building • Names and contact details to be obtained for all visitors and staff using the facilities
Function Room	<ul style="list-style-type: none"> • One-way walkway flows for access to tables, toilets and exits (see floor plan) • Ladies and assisted toilets only accessible inside the building with external Gents toilet available through Exit route • Tables arranged to comply with social distancing guidelines (2m or 1m + mitigation) • Sanitising station created and inside the toilets including hand towels and waste bins (see floor plan) • Enhanced cleaning regimes developed for kitchen, bar, function room and toilets with regular sanitising of high-use equipment and surfaces e.g. cash till, card payment machine, beer pumps etc. (see appendix) • Bar staff to operate social distancing as far as practicable • A maximum of 30 people will be allowed in the building at any one time (subject to ongoing guidance)
Kitchen	<ul style="list-style-type: none"> • Access to kitchen restricted to authorised persons only. • Staff supplied with full range of PPE (visors, face masks, gloves) • Maximum of two staff in kitchen when preparing food with four staff on match days, spaced distantly, wherever possible. • Separation of food preparation, serving duties and cash/payment processing • Perspex screen at serving hatch with contactless payment offered • Buffets for function suite with disposable plates, cutlery and napkins, wherever possible • Queuing for food from the buffet to be supervised to ensure social distancing is respected
Back Office	<ul style="list-style-type: none"> • Back office equipment will be shared by the smallest number of people as possible • Keyboards, mouse, safe etc. to be sanitised before each use
Staffing	<ul style="list-style-type: none"> • Staff MUST be fit for work and show no symptoms of the virus • Staff and volunteers appraised of the new processes and given the opportunity to input into plans • Increasing the frequency of hand washing amongst staff • Staff offered the opportunity to wear face coverings

BELPER TOWN FOOTBALL CLUB FLOOR LAYOUT

VISITOR THROUGHWAYS



SANITISING LOCATIONS

